

CHADWICK HOMES AT

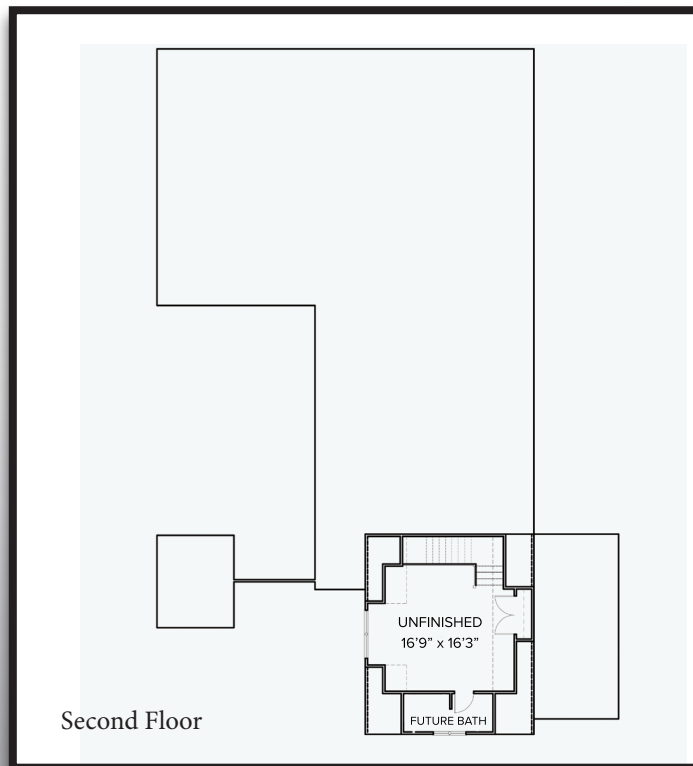
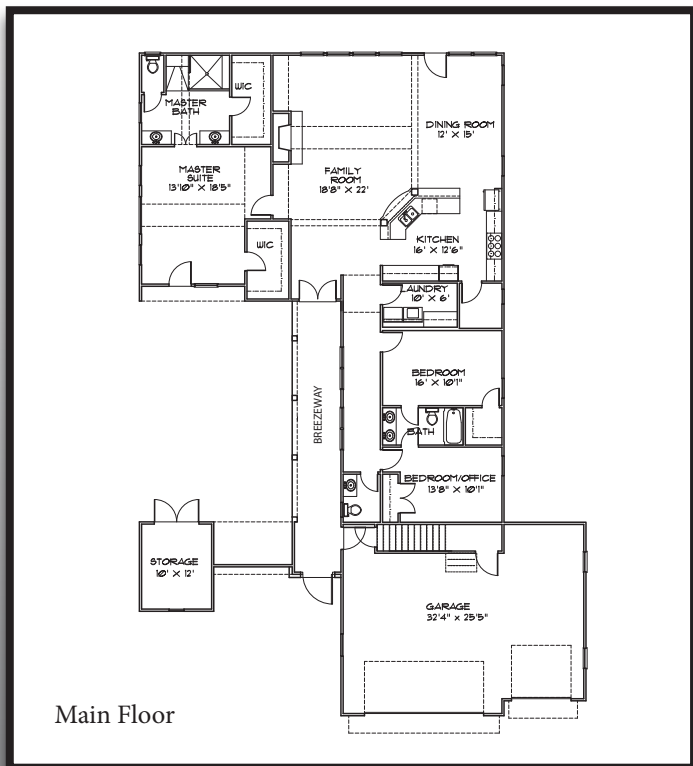
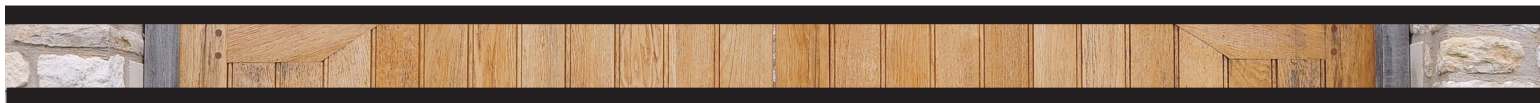
SMOKERISE CORNERS



The Conewago

Main Floor: 2263 sq ft

- Exceptional Quality and Attention to Detail in this Uniquely Chadwick Homes Neighborhood of Courtyard Style Homes
- Homes Designed to Include Today's Most Desired and Timeless Features and Finishes
- Unique Front Entry Gate Opens into an Enclosed Outdoor Courtyard Space – Perfect for Relaxing or Entertaining
- Wonderful Open Main Level Living Includes Owner's Suite, Three Car Garage, Storage, Guest Bedrooms, Powder Room, Separate Storage Space (Rooms and Spaces Vary According to Plan)
- Smokerise Corners is a Lawn Maintenance Community Located in NorthEast Peachtree City – Minutes to Shopping, Award Winning Peachtree City Schools – Just 30 Minutes to Hartsfield-Jackson Atlanta International Airport



Elaine White, REALTOR®

Direct: 770-616-4483 • Office: 770-487-8300

Elaine.White@BHHSGeorgia.com



BERKSHIRE HATHAWAY
HomeServices
Georgia Properties

Gail McFarling, Associate Broker

Direct: 678-300-4776 • Office: 770-487-8300

Gail.McFarling@BHHSGeorgia.com