

CHADWICK HOMES AT

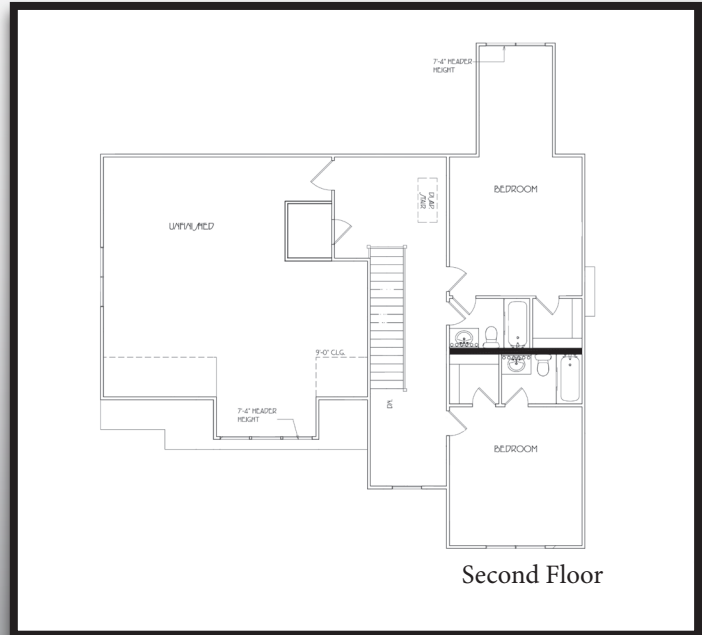
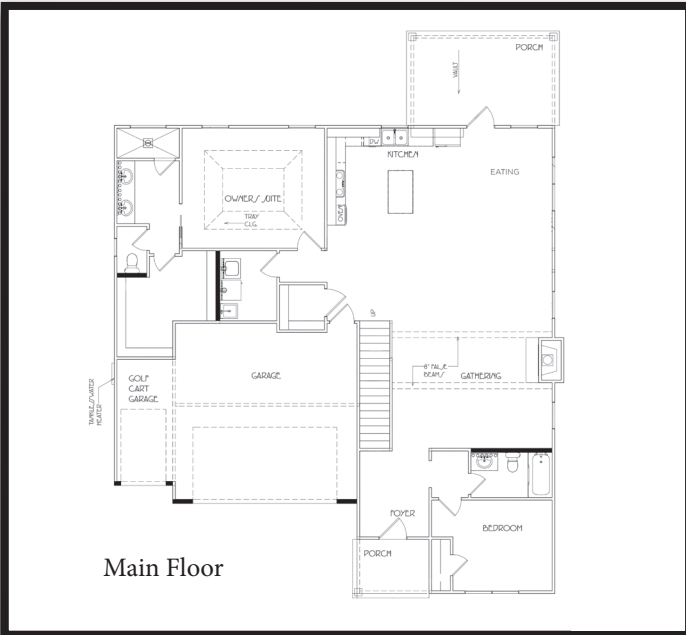


HAWTHORN - 4 Bedrooms, 4 Baths

Main Level: 1575 heated sq. ft.
 Second Level: 921 Heated sq. ft.
 Total : 2496 Total Heated sq. ft.

- Exceptional Chadwick Homes Quality and Attention to Detail – Homes Include Most Desired and Timeless Features and Finishes
- Welcoming Front Porch, Covered Rear Porch and Golf Cart Garage - Full, Unfinished Basement – Framed Elevator Shaft
- Wonderful Open Main Level Living – Fabulous Owner’s Suite – Guest Room with En-suite Bath
- Gourmet Kitchen - Designer Cabinets – Island - Spacious Pantry - Granite and Solid Surface Countertops
- Beautiful, Durable Prefinished Engineered Wood Floors
- Upstairs Features Two Additional Bedrooms each with Separate Bath - 713 sf of Walk In Conditioned Storage
- Maybeck is a Lawn Maintenance Community Located in North Peachtree City – Minutes to Shopping, Award Winning Peachtree City Schools – Just 30 Minutes to Hartsfield International Airport

Maybeck, Peachtree City



Elaine White, REALTOR®

Direct: 770-616-4483 • Office: 770-487-8300
 Elaine.White@BHHSGeorgia.com



BERKSHIRE HATHAWAY
 HomeServices
 Georgia Properties

Gail McFarling, Associate Broker

Direct: 678-300-4776 • Office: 770-487-8300
 Gail.McFarling@BHHSGeorgia.com