

CHADWICK HOMES AT



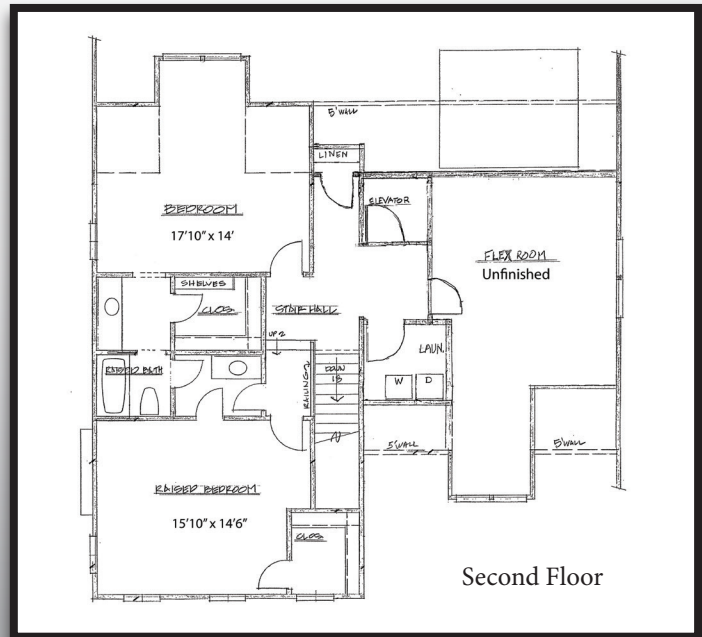
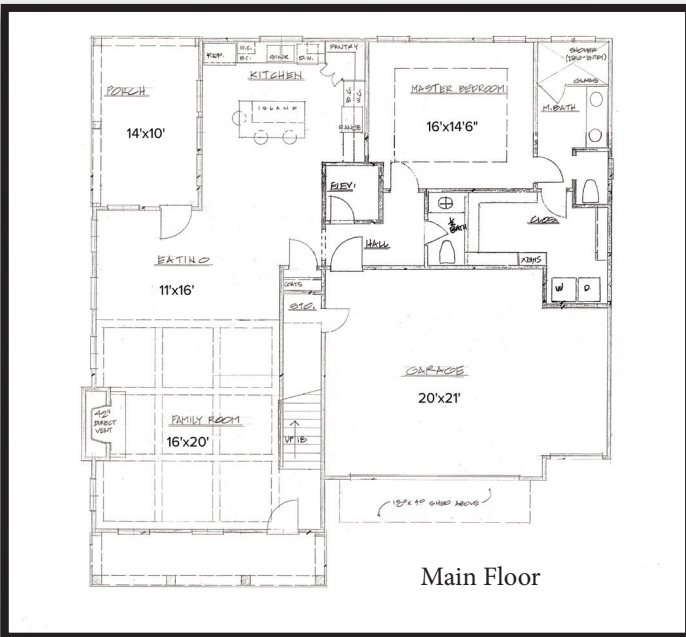
Jasmine

4 Bedrooms, 2.5 Baths | \$549,900

1111 Maybeck Way, Peachtree City

- Exceptional Chadwick Homes Quality and Attention to Detail – Homes Include Most Desired and Timeless Features and Finishes
- Welcoming Front Porch, Covered Rear Porch and Golf Cart Garage Plus Full Unfinished Basement – Framed Elevator Shaft
- Wonderful Open Main Level Living – Fabulous Owner’s Suite – Powder Room
- Gourmet Kitchen - Designer Cabinets – Island - Spacious Pantry - Granite and Solid Surface Countertops
- Beautiful, Durable Prefinished Engineered Wood Floors
- Two Additional Bedrooms with Separate Vanities/Shared Bath, Plus Flex Room/Bedroom 4
- Maybeck is a Lawn Maintenance Community Located in North Peachtree City – Minutes to Shopping, Award Winning Peachtree City Schools – Just 30 Minutes to Hartsfield International Airport
- Main Floor: 1501 sf Upstairs: 1486 sf Total: 2987 sf Unfinished Basement: 1501 sf

Jasmine Plan - Lot 6



Elaine White, REALTOR®

Direct: 770-616-4483 • Office: 770-487-8300

Elaine.White@BHHSGeorgia.com



BERKSHIRE HATHAWAY
HomeServices
Georgia Properties

Gail McFarling, Associate Broker

Direct: 678-300-4776 • Office: 770-487-8300

Gail.McFarling@BHHSGeorgia.com